



news

PENDULUM

AW 2011

PENDULUM

Pendulum jewellery are characterised by the combination of the raw detail and a soft beautiful play on sophistication.

Jewellery designer Jeannette Nielsen is the woman behind the Pendulum Collections. In 2006, she created her first jewellery collection, which was characterised by simple and feminine pendulum necklaces, hence the name Pendulum. From the beginning Pendulum has had its own personal and feminine style carrying different beautiful details, a special hook or a specific charm.

Jeannette Nielsen has a passionate love for working with different materials and colours and has mastered to combine them in the best way possible. Raw materials plexiglass, wood, rubber, and epoxy arranged with more feminine materials like stones, crystal, crochet silk, ceramics, gold and silver. Her sense for materials, feel for details and feminine style provides the Pendulum Collections with a specific sophisticated and almost poetic look.



w111500 leather + rubber







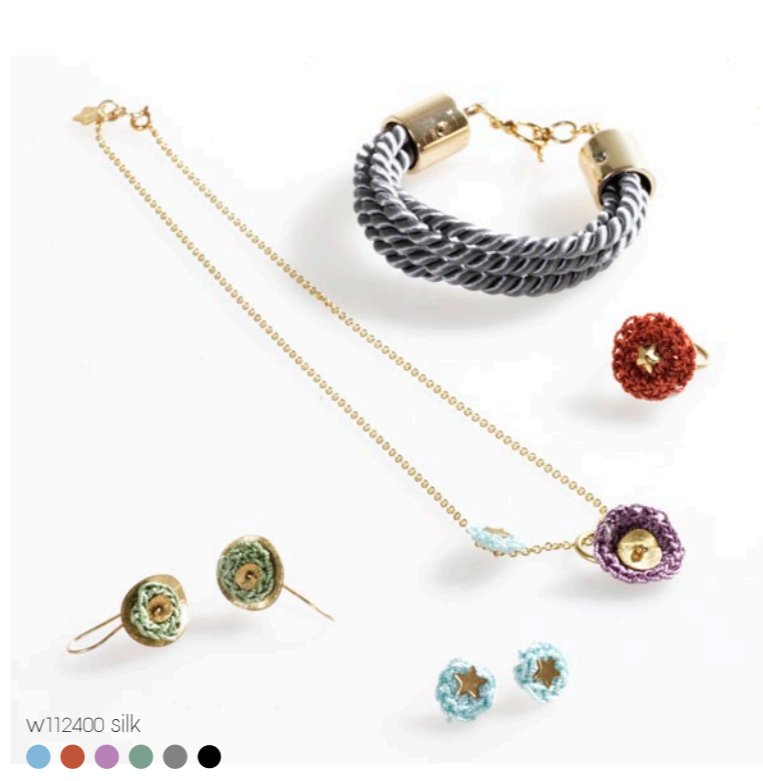
w112100 metal + epoxy
 ● ○ ● ● ● ● ●



w112200 metal + leather
 ● ○ ●



w112300 leather
 ● ● ● ● ● ●



w112400 silk
 ● ● ● ● ● ● ●



w112500 crystal
 ● ● ● ● ●

classic





w11700 metal + epoxy
 ● ○ ○ ○ ● ● ● ● ● ●



w11800 metal + epoxy
 ● ○ ● ● ● ● ● ● ● ●



w11300 leather
 ● ● ● ● ● ● ● ● ● ●



w11400 metal + epoxy
 ● ● ● ● ● ● ● ● ● ●



w11900 metal + epoxy
 ● ○ ● ● ● ● ● ● ● ●



w111000 crystal
 ● ● ● ● ● ● ● ● ● ●



w11500 metal
 ● ○ ● ● ● ● ● ● ● ●

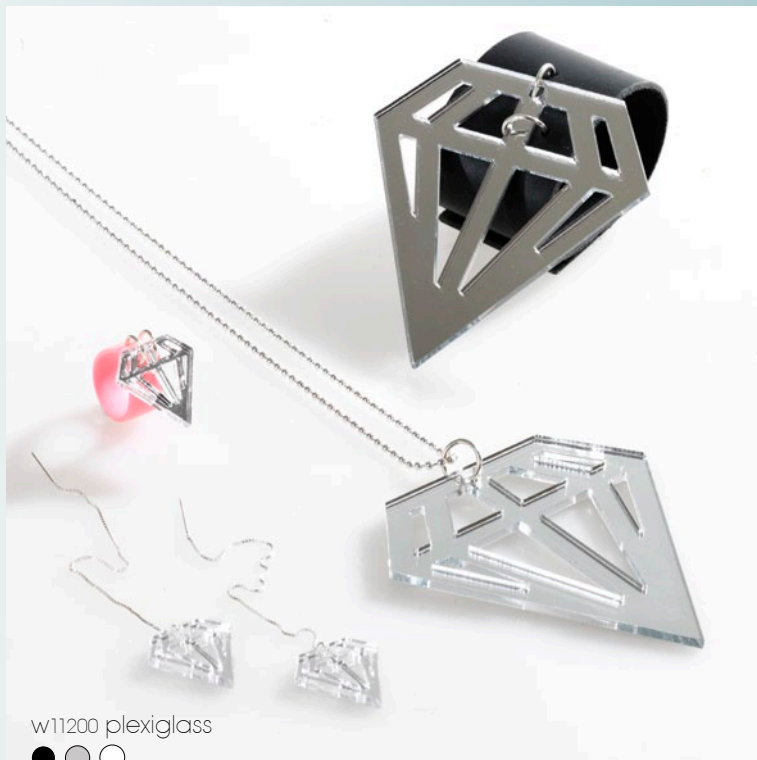


w11600 metal + epoxy
 ● ○ ● ● ● ● ● ● ● ●

PENDULUM
tordenskjoldsgade 12
DK-1055 copenhagen k
www.pendulum.dk
mail@pendulum.dk
ph.+45 61659655



w1100 leather



w11200 plexiglass



photo and layout by meisterbrau